

creo



ICF Wall System



**NHBC & LABC ACCREDITED
BUILDING BLOCK**

Creo 35 Wall block

Minimum of 8mm thick render coat applied directly to the outer face, 150mm thick external grey EPS, 150 mm thick concrete, 50 mm thick grey internal EPS and 12.5 mm thick dense plasterboard bonded to the EPS achieves a **U value of 0.15 W.m-2.K-1**

102.5 mm thick brick external skin and 50 mm wide air cavity, 150 mm thick external grey EPS, 150 mm thick concrete, 50 mm thick internal grey EPS and 12.5 mm thick dense plasterboard bonded to the EPS achieves a **U value of 0.14 W.m-2.K-1**

For use in load bearing and non-loadbearing internal, external and separating walls in domestic and commercial buildings with up to a five-storey superstructure.

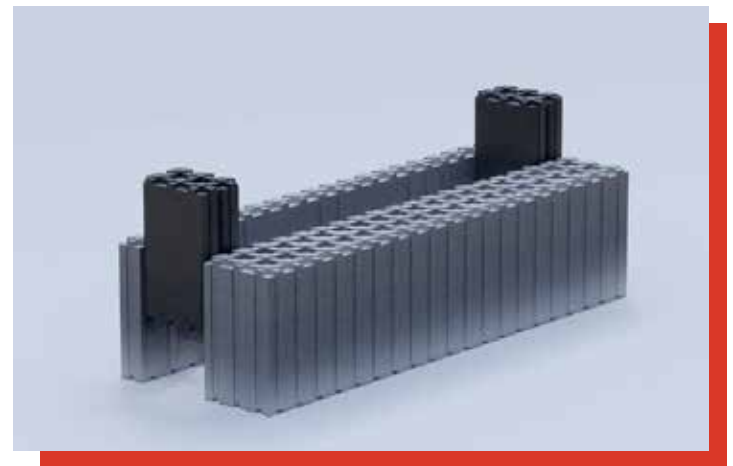
The system provides permanent formwork for in-situ dense aggregate concrete walls and contributes to the thermal insulation of the finished construction.

The components are made from expanded polystyrene (EPS)

The wall is formed by placing or pouring concrete into the formwork:

- Standard wall elements
- end elements
- corner elements
- ring beam elements
- lintel elements
- insulation spacers
- end piece.

Passive House ICF System



ICF Wall System Manufacturing

The standard wall elements consist of an inner and outer skin of EPS with an integral EPS web connecting both skins. Blocks are joined together horizontally using a castellated horizontal joint, with the perpendicular joints being butted together

- ✓ Great Acoustics
- ✓ Sound Insulation
- ✓ Great Thermal Insulation
- ✓ Energy Efficiency
- ✓ Structural Integrity
- ✓ Fraction of Time to Build
- ✓ Manufactured in the UK
- ✓ U-VALUE - Reduced to 1.4